



LOCATION Cusco, Peru

DATE 2019

ORGANIZATION Cool Effect



106,000 stoves

have been installed

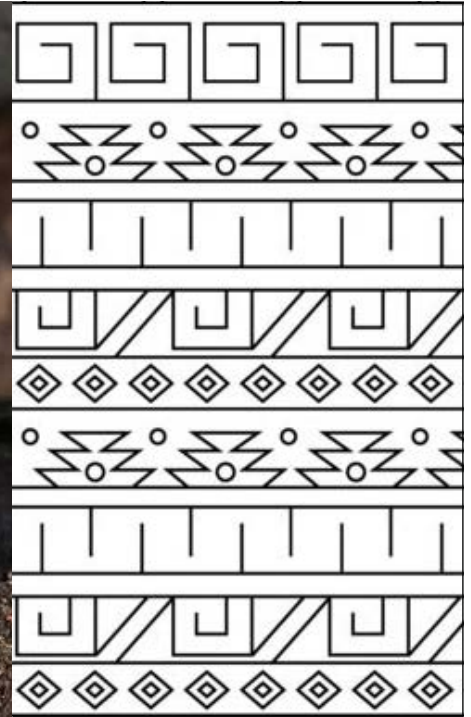
SUMMARY

Aviation Renewables is committed to offsetting its emissions by supporting climate change mitigation projects around the world. In 2019, Aviation Renewables supported the Qori Concha Cool Effect's Project. This project provided improved cookstoves for residents of a heavily forested area of Peru. These cookstoves will reduce the fuel requirements for daily cooking duties, and dramatically improve indoor air quality for the residents. A few highlights of this project are as follows:

- As many as **three billion people** worldwide cook on open fires, and most of those open fires are fueled by wood.
- When billions of people cook with wood, a lot of trees are cut, we lose our forests, and huge amounts of carbon are released into the atmosphere.
- About **18 million acres of forest are lost every year**, of which 50%—9 million acres—is directly attributable to the collection of firewood as fuel.
- The destruction of forests contributes **25% of the world's total greenhouse gas production**, almost as much as the entire global transportation system.
- So, reducing the use of firewood as fuel will have a direct and significant impact on carbon emissions, deforestation, and climate change. **And improved cookstoves do just that: reducing firewood use by as much as 60%, mitigating deforestation, and reducing CO₂ emissions into the atmosphere.**



SUMMARY



Peru is one of the most heavily forested countries in the world, with some 206,000 square miles covered in trees. Only Brazil holds a larger area of Amazonian forest. But 1,100 square miles of Peru's forests are cut down every year, accounting for nearly half of the country's greenhouse gas emissions.

With a goal to install 1 million improved cookstoves in Peru, this project has already achieved over 106,000 installed, reducing CO₂ emissions by nearly 500,000 tonnes, and reducing firewood consumption by over 330,000 tonnes.

Aviation Renewables will continue to support the Project in the future.

